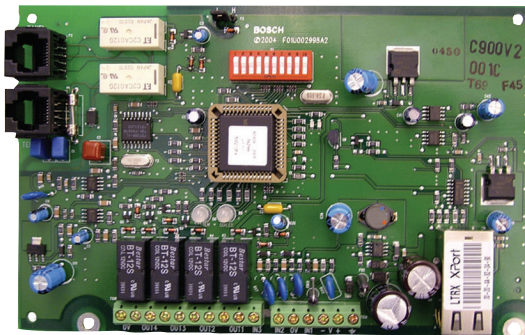


# Conettix C900V2 Dialer Capture Ethernet Module

www.boschsecurity.com



**BOSCH**  
Invented for life



- ▶ Captures alarm and event data from dialer-based control panels using CONTACT ID, SIA, Modem II, Modem IIe, Modem IIIa<sup>2</sup>, Pulse, and other formats
- ▶ Performs full data transmissions without changing the data
- ▶ 12 VDC to 24 VDC voltage range
- ▶ Re-routes signals using UDP/IP-based data networks
- ▶ Convenient connection (RJ-45 Jack) to Ethernet networks

The Conettix C900V2 Dialer Capture Ethernet Module works with most control panels using a standard digital dialer format and provides end-to-end security. The module links the digital dialer to the Public Switched Telephone Network (PSTN), the digital dialer's telephone interface, and an Ethernet network. With the Ethernet link, the C900V2 can:

- Communicate with the control panel dialer
- Decode and deliver signals to a Conettix D6600 Communications Receiver/Gateway
- Relay a confirmation message back to the control panel dialer

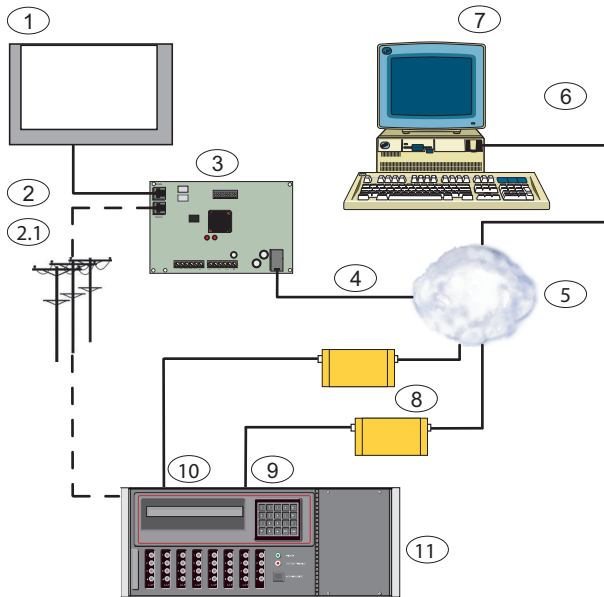
Whether a control panel dials through a telephone line or through the C900V2, the data remains the same. The C900V2 empowers digital dialer control panels to work over an IP network such as a Local Area Network (LAN), a Wide Area Network (WAN), or the Internet.

## System overview

When the dialer has a message to report, the C900V2 simulates dial tone and line voltages, causing the dialer to behave as though it is connected to a monitoring center digital receiver through the PSTN.

The C900V2 decodes and converts the transmitted dialer message to data for transport over any UDP/IP network.

After the Conettix D6600 Communications Receiver/Gateway receives a message or event, it sends an acknowledgement message to the C900V2. The C900V2 returns an appropriate response to the dialer, maintaining end-to-end acknowledgment. The C900V2 operates in Intercept Mode, connecting the dialer to the network under normal circumstances. If the C900V2 loses contact with the Conettix D6600 Communications Receiver/Gateway, the unit goes into Fallback Mode, connecting the dialer to the PSTN telephone line.



- 1. Control Panel
- 2. Dialer Connection
  - 2.1 Dialer Output to RJ-31x Jack and PSTN
- 3. Conetix C900V2 Dialer Capture Ethernet Module
- 4. Ethernet or LAN Connection
- 5. LAN, WAN, or the Internet
- 6. Connection To Ethernet Network Interface Card (NIC)
- 7. Host PC with Conetix D6200 Programming/Administration Software
- 8. Conetix D6680 Ethernet Network Adapter
- 9. Com 1 (Optional)
  - 1. Com 4
  - 0.
- 1. Conetix D6600 Communications Receiver/Gateway
  - 1.

**Functions**

**Communication Formats**

- ADT-SIA
- BFSK (2300Hz ACK Tone or 1400Hz ACK Tone)
- DTMF (Contact ID, High Speed and 4/2 Express)
- FBI Superfast DTMF (1400 Hz ACK Tone or 2300 Hz ACK Tone)
- Pulse 3/1, 3/1 Checksum, 4/2 (1400 Hz ACK Tone or 2300 Hz ACK Tone)
- Radionics Modem II, Radionics Modem IIe , and Modem IIIa<sup>2</sup>
- Series FSK and DTMF
- SIA V.21, 110/300 baud

SIA Bell 103, 110/300 baud

Robofon

Telim

**Inputs**

| Input | Description   |
|-------|---|
| 1     | Used as an end-of-line (EOL) supervised loop. Detects open, short, and normal states. Terminate this input with a 10 kΩ EOL resistor. |
| 2     | Used for intercept inhibit to force the C900V2 into Fallback mode for at least two minutes.   |
| 3     | Used for intercept override, allowing users to switch between intercept and fallback modes.   |

**Outputs**

| Output | Description  |
|--------|--|
| 1      | Provides local annunciation if the power to the C900V2 is lost or the CPU fails.                                     |
| 2      | Provides local annunciation if the connection to the monitoring center is lost.                                      |
| 3      | Provides local annunciation whenever the C900V2 is in intercept mode.  |
| 4      | Controllable from the monitoring center and the Conetix D6200 Programming/Administration Software (default is open). |

**Intercept and Fallback Modes**

- **Intercept Mode:** The C900V2 connects the dialer to the network. Intercept mode remains on as long as the C900V2 remains in continuous contact with the Conetix D6600 Communications Receiver/Gateway.
- **Fallback Mode:** The C900V2 connects the dialer to the telephone line, removing itself from the telephone circuit. Fallback mode occurs if the C900V2 loses contact with the Conetix D6600 Communications Receiver/Gateway, loses power, or stops operating correctly.

**LED Indicators**

The C900V2 has two dual-colored LEDs that indicate the module's status (the SYSTEM LED and the DIALER LED).

**Modular Jacks**

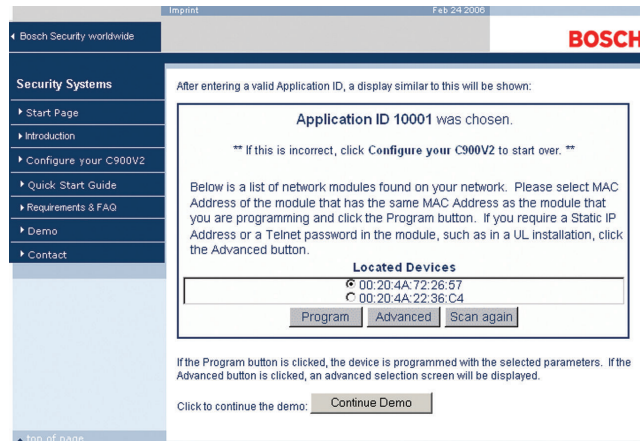
The C900V2 module has three modular jacks.

- **Panel Jack:** Connects to a dialer through a modular telephone cord (D162).
- **TELECO Jack:** Connects to a PSTN line through a modular telephone cord (D162).
- **Ethernet Jack:** Connects to the Ethernet data network through an Ethernet cable. For 10BASE-T, the cable must be Category 3 or better. For 100BASE-T, the cable must be Category 5 or better.

### Polling and Supervision

Conettix C900V2 polling helps the Conettix D6600 Communications Receiver/Gateway to perform supervision.

### Web Programming Tool



The web programming tool makes the C900V2 configuration process simple and convenient, similar to browsing a web site. After obtaining an Application ID, installers can go to [www.c900v2.com](http://www.c900v2.com) from a computer with internet access and configure the C900V2 for the preferred central station.

### Certifications and approvals

|           |        |                                      |
|-----------|--------|--------------------------------------|
| Australia | A-Tick |                                      |
| Canada    | IC     |                                      |
| USA       | FCC    | Part 15 Radiated/Conducted Emissions |



#### Notice

FM approval applies when the C900V2 is used with the Conettix D6600 Communications Receiver/Gateway.

| Region  | Certification |  |
|---------|---------------|--|
| Europe  | CE            | EMC, LVD, R&TTE, RoHS  |
| Belgium | INCERT        | B-509-0040/a   |
| USA     | UL            | AMCX: Central Station Alarm Units (UL1610, UL1635), AMCX7: Central Station Alarm Units Certified for Canada (cULus), APAW: Police Station Alarm Units (UL365, UL464), APAW7: Police Station Alarm Units Certified for Canada (cULus), APOU: Proprietary Alarm Units (UL1076), APOU7: Proprietary Alarm Units Certified for Canada (cULus), NBSX: Household Burglar Alarm System Units (UL1023), NBSX7: Household Burglar Alarm System Units Certified for Canada (cULus), UTOU: Control Units and Accessories - Household System Type (UL985), UTOU7: Control Units and Accessories - Household System Type Certified for Canada (cULus) |

| Region | Certification |  |
|--------|---------------|--|
|        | UL            | UOXX: Control Unit Accessories, System (ANSI/UL 864)     |
|        | FM            |  |
|        | CSFM          | see our website  |
|        | FDNY-CoA      | 6059 [D9412GV3 & D7412GV3]                               |
|        | FDNY-CoA      | 6173   |
|        | FDNY-CoA      | 6174   |
|        | FDNY-CoA      | 6196   |
|        | NIST          | FIPS 197 Certificate No. 304                             |
| Canada | ULC           | APOU7.S1871 Proprietary Alarm Units Certified for Canada |
|        | ULC           | ULC-ORD C1023 - Household Burglar Alarm System Units     |

### Installation/configuration notes

#### Compatibility Information

Numerous UL Listed Fire Alarm Control Panels (FACPs) have proven compatible with the C900V2. For a complete list, refer to the *Network Dialer Capture Module C900V2 Compatibility List* (F01U010036).

### Parts included

| Quantity | Component       |
|----------|-----------------|
| 1        | Module          |
| 1        | Hardware pack   |
| 1        | Literature pack |

### Technical specifications

#### Connectors

|                 |  |
|-----------------|--|
| Control Panel:  | RJ-45 Modular Jack   |
| Telco:          | RJ-45 Modular Jack   |
| LAN/WAN:        | RJ-45 Modular Jack   |
| Ethernet Cable: | Unshielded twisted pair 100 m (328 ft)<br>For 10BASE-T, use Category 3 or better. For 100BASE-T, use Category 5 or better. |

#### Environmental Considerations

|                          |                                |
|--------------------------|--------------------------------|
| Temperature (Operating): | 0°C to +49°C (+32°F to +120°F) |
|--------------------------|--------------------------------|

#### Indicators

|                     |                |
|---------------------|----------------|
| Module Status LEDs: | 2 dual-colored |
|---------------------|----------------|

**Module**

|             |  |
|-------------|--|
| Dimensions: | 17.8 cm x 11.4 cm<br>(7 in. x 4.5 in.) |
| Interface:  | IEEE 802.3                             |

**Power Requirements**

|                    |                                 |
|--------------------|---------------------------------|
| Current (Maximum): | 280 mA                          |
| Voltage Range:     | 12 VDC to 24 VDC nominal        |
| Alarm Outputs:     | Normally-open (NO) dry contacts |

**Protocols**

|                       |                |
|-----------------------|----------------|
| Output To LAN or WAN: | UDP/IP packets |
|-----------------------|----------------|

**Ordering information****Conettix C900V2 Dialer Capture Ethernet Module**

Compatible with control panels using a standard digital dialer format. Provides end-to-end security. Allows digital dialer control panels to work over an IP network (such as LAN, WAN, or the Internet).  
Order number **C900V2**

**Accessories****D162 Modular Telephone Cord**

A 61 cm (2 ft) telephone cord with a standard plug on one end.  
Order number **D162**

**AE1 Standard Enclosure**

Standard gray enclosure with keyed lock. Measures 35.6 cm x 31.8 cm x 7.6 cm (14 in x 12.5 in x 3 in).  
Order number **AE1**

**AE4 Fire enclosure 20.7x15x4.25in, red**

Large red enclosure with keyed lock. Measures 20.7 in. x 15 in. x 4.25 in. (52.7 cm x 38.1 cm x 10.8 cm).  
Order number **AE4**

**Represented by:**

**Europe, Middle East, Africa:**  
Bosch Security Systems B.V.  
P.O. Box 80002  
5600 JB Eindhoven, The Netherlands  
Phone: + 31 40 2577 284  
emea.securitysystems@bosch.com  
emea.boschsecurity.com

**Germany:**  
Bosch Sicherheitssysteme GmbH  
Robert-Bosch-Ring 5  
85630 Grasbrunn  
Germany  
www.boschsecurity.com

**North America:**  
Bosch Security Systems, Inc.  
130 Perinton Parkway  
Fairport, New York, 14450, USA  
Phone: +1 800 289 0096  
Fax: +1 585 223 9180  
onlinehelp@us.bosch.com  
www.boschsecurity.us

**Asia-Pacific:**  
Robert Bosch (SEA) Pte Ltd, Security Systems  
11 Bishan Street 21  
Singapore 573943  
Phone: +65 6571 2808  
Fax: +65 6571 2699  
apr.securitysystems@bosch.com  
www.boschsecurity.asia