



L'Énergie Sans Limite !
Safe Energy for Life !



Company networks, Service industries, Critical Apps.

E3 Pro

E3 Pro UPS are dedicated to the electrical protection of networks and loads. They are available in 2 versions: E3 Pro RM (1U rack-mountable UPS) and E3 Pro RT (Rack/Tower convertible 2U and 3U UPS).

From 1000 to 10kVA

High-performance protection

Equipped with On-Line Double Conversion technology operated by a micro-processor, the E3 Pro range delivers a totally protected and perfect sine wave current to all of your networks and loads.

In the event of a power cut, the E3 Pro range offers up to 30 minutes of backup time, therefore ensuring an uninterrupted service and critical data backup.

An external battery connector allows you to connect additional battery packs, which extends the backup time depending on your needs and situation (along with a display of the battery status on the screen of the UPS).



Online Double Conversion technology



Rack/Tower convertible*



Multi-directional LCD control screen



Remote control software



Backup time up to 30 min.**

Extended backup time

Thanks to its powerful integrated battery charger (from 1A to 6A depending on the model), it is possible to add the necessary number of battery packs to ensure an extended backup time.

An ideal format

The E3 Pro range is available in two versions, both designed for easy installation:



- The E3 Pro RM 1000 VA is a 1U rack-mountable UPS that can be easily mounted into a 19" rack-mount server cabinet.
- The E3 Pro RT from 1000 to 10k VA is a versatile UPS range designed to easily fit into various environments: horizontally, in a patch bay with attachment brackets (included), or vertically as a "tower" with its base (included).

Energy-saving and environmentally-friendly features



- A built-in charger reduces battery charging time and enables it to be charged to 90% capacity in just 4 hours, meaning that a maximum recharge can be guaranteed between successive power cuts.
- The cold start function enables an emergency startup of any connected hardware.
- When the mains power is restored, the E3 Pro restarts automatically.
- The batteries recharge as soon as there is a power supply.

* RT models
** Depending on the model and connected load

ADAPTED SOLUTIONS FOR ALL SITUATIONS

E3 Pro RT: the Rack/Tower solution

Power factor of 0.9

- Optimal output power factor: 0.9
- High performance
- Efficiency for critical applications

Flexible design

Easy-to-use 2 in 1 design :



Rack position

E3 Pro RT from 1 to 3k VA



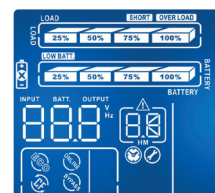
Tower position



E3 Pro RT 5-6k VA

User-friendly LCD display

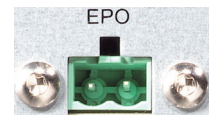
- Accurate and user-friendly LCD screen displays status and settings in real time
- Rotating LCD display can be used both in tower and rack-mount position
- Intuitive front panel LCD display: gives direct access to UPS settings for easy modification



LCD Rack Display
E3 Pro RT from 1 to 3kVA

EPO/CPAU emergency stop control

This function ensures the safety of personnel and equipment in the event of an emergency by initiating a total and immediate shutdown of the UPS (E3 Pro 5-6-10k RT models).



Advantages of E3 Pro RT models

Extended backup time

The E3 Pro RT range is equipped with powerful integrated battery chargers to ensure an extended backup time:

- From 1A to 3.5A for 1 to 3k RT models
- From 1A to 6A for 5 to 10k RT models

Up to 4 backup extensions can be added to the UPS.

E3 Pro 1000 RM: the 1U rack-mount solution

1U rack-mount model

The E3 Pro 1000 RM model can be easily installed in a 19" rack-mount server case thanks to its small vertical dimensions (1U).



Indicators

Audible alarms and LED displays indicate the UPS status.

Advantage of E3 Pro 1000 RM

Programmable outlets

Programmable outlets allow users to easily control different load groups separately, so that during a power outage, it is possible to increase the backup time on the most strategic and vital hardware by stopping non-critical hardware connected to programmable outlets. These outlets are easy to manage using the Infopower software.

OTHER ESSENTIAL ASSETS OF THE E3 PRO RANGE

Communication

Communication ports

The E3 Pro UPS systems are equipped with USB and/or RS 232 ports to allow communication between the UPS and your various protected IT devices. This is managed using Infopower software.

Infopower software

- Management software, included as standard
- Automatic shutdown of files during a power cut, which saves the data for all the PCs in a network
- The communication software offers a graphic interface to view the system status, various settings, events log, etc.

SNMP agent (optional)

A SNMP slot allows the connection of an SNMP agent and the use of its associated software for UPS remote management.

Energy Saving ECO Mode



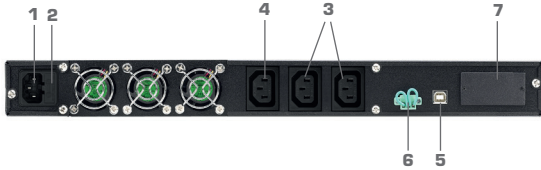
Efficiency of up to 95% for the 1 to 3 kVA model reduces energy consumption and costs.

This operating mode delivers a static bypass power supply and returns to Online Double Conversion when necessary.

CONNECTION

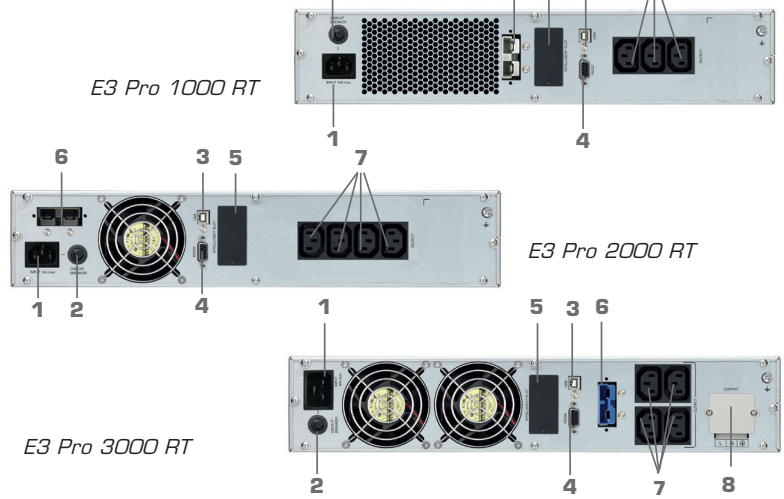
Connectors tailored for all networks applications

E3 Pro 1000 RM



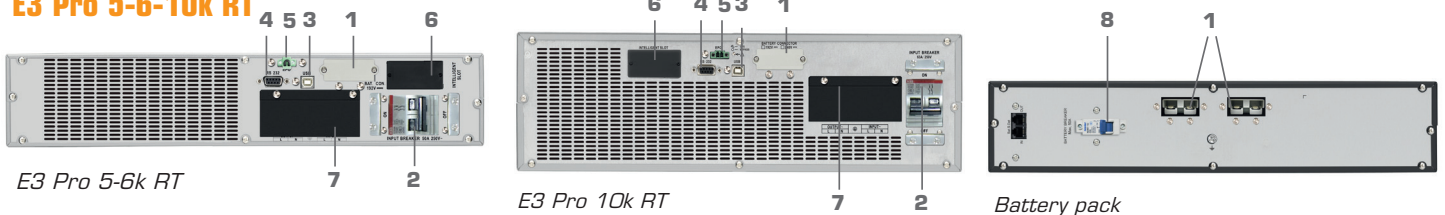
- | | |
|--------------------------|--------------------------------------|
| 1. AC input | 5. USB communication port |
| 2. AC fuse | 6. Remote control function connector |
| 3. Programmables outlets | 7. SNMP slot |
| 4. Output outlets | |

E3 Pro 1-2-3k RT



- | | |
|------------------------------|-------------------------------|
| 1. AC inlet | 5. SNMP slot |
| 2. Input breaker | 6. External battery connector |
| 3. USB communication port | 7. Output outlets |
| 4. RS 232 communication port | 8. Output terminal |

E3 Pro 5-6-10k RT



- | | |
|-------------------------------|--------------------------|
| 1. External battery connector | 5. EPO connector |
| 2. Input breaker | 6. SNMP slot |
| 3. USB communication port | 7. Input/output terminal |
| 4. RS 232 communication port | 8. Battery breaker |

OPTIONS

SNMP agent

Using the SNMP agent with the E3 Pro RM/RT UPS devices makes it easier to manage the UPS due to its various special features:

- Connection to the Ethernet network and identification by IP address
- Setting and programming a system shutdown and restart on a weekly (or other) basis
- Local or remote UPS configuration



Smart charger S

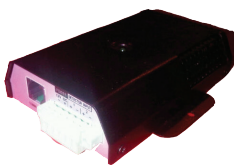
To further increase backup time extensions, an external battery charger can be added: 24Vdc for the E3 Pro 1k RT, 48Vdc for the E3 Pro 2k RT & 72Vdc for the E3 Pro 3k RT.



EMD

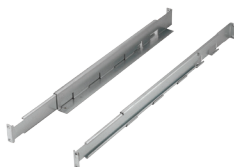
This detection sensor allows the remote monitoring of the temperature and humidity levels of the E3 Pro environment.

The sensor works by connecting to the SNMP card, and may also be used to send dry contacts, making it compatible with security systems or alarms.



Rack kit

Enables secure installation in a patch bay (recommended from 2000 VA).



Extended backup time

The E3 Pro range offers several battery extension solutions for unstable or highly disruptive environments. Different types of battery packs are available depending on the type of backup time required and the layout of the premises. The large range of battery packs are sure to meet most needs.

RS485 card

In order to make the E3 LCD Pro range compatible with every type of business, the RS 485 card can be added as an option, allowing the E3 Pro RM/RT UPS to communicate with installations using industrial protocols over large distances.

AS400 dry contact card

The AS400 communication card supplies dry contacts to get alarm reports from your UPS (e.g. centralized technical management). Depending on the application, dry contacts can be normally open or normally closed.

External Maintenance Bypass Switch (BMe)

Provides continuous power to connected equipment during a UPS's maintenance or replacement via a rotary switch

- Provides a large number of outlets for extended use
- Rack or Tower model depending on the working environment (1 to 3 kVA)
- Simple installation
- Master/Slave mode (BMe1)



BMe 1 IEC RM (E3 Pro RT from 1 to 3k VA)



BMe 2 RM (E3 Pro RT from 5 to 10k VA)

TECHNICAL CHARACTERISTICS

GENERAL CHARACTERISTICS

	E3 Pro 1000 RT	E3 Pro 1000 RT	E3 Pro 2000 RT	E3 Pro 3000 RT	E3 Pro 5000 RT	E3 Pro 6000 RT	E3 Pro 10k RT
Technology	On Line Double Conversion						
Power	1000VA/800W	1000VA/900W	2000VA/1800W	3000VA/2700W	5000VA/4500W	6000VA/5400W	10000VA/9000W
Power factor	0.8		0.9				
IEC Output connectors	3 (10A)		4 (10A)	4 (10A) + Terminal	Terminal		

PROTECTION & FILTERING

Output form	Pure Sine Wave						
Protection	Discharge / overcharge / overload						
Input protection	Fuse			Breaker			

PHYSICAL CHARACTERISTICS

Dimensions - LxHx (mm)	438 x 477 x 44 (1U)	438 x 310 x 88 (2U)	438 x 410 x 88 (2U)	438 x 638 x 88 (2U)	UPS: 438 x 530 x 88 (2U) Battery pack: 438 x 688 x 88 (2U)	UPS: 438 x 605 x 133 (3U) Battery pack: 438 x 605 x 133 (3U)
Net weight (Kg)	12,7	12,7	19	29,3	UPS: 15 Battery pack: 55	UPS: 18 Battery pack: 65

INPUT TECHNICAL CHARACTERISTICS

Nominal voltage	110/120 VAC or 220/230/240 VAC*	110/115/120/127VAC or 208/220/230/240 VAC*		208/220/230/240VAC		
Voltage range	55-150 VAC or 110-300 VAC at 50% load* 80-150 VAC or 160-300 VAC at 100% load*	60-145 VAC or 120-300 VAC at 50% load* 90-145 VAC or 180-300 VAC at 100% load*		110-300 VAC (based on load at 50%) 176-300 VAC (based on load at 100%)		
Frequency range	40/70 Hz			46Hz ~ 54 Hz or 56Hz ~ 64 Hz		

OUTPUT TECHNICAL CHARACTERISTICS

Voltage - AC mode	110/120 VAC or 220/230/240 VAC*	110/115/120/127 VAC or 208/220/230/240 VAC*		208/220/230/240VAC		
Automatic voltage regulation	± 1%					
Frequency range (Synchronized range)	57 ~ 63 Hz ou 47 ~ 53 Hz	47Hz ~ 53 Hz or 57Hz ~ 63 Hz		46Hz ~ 54 Hz or 56Hz ~ 64 Hz		
Frequency range (Batt mode)	60 Hz or 50 Hz ± 0.3 Hz	50 Hz ± 0,25 Hz or 60 Hz ± 0,3 Hz		50 Hz ± 0.1 Hz or 60 Hz ± 0.1 Hz		
Harmonic distortion	≤ 3 % THD (Linear Load) - ≤ 5 % THD (Non-linear Load)	≤ 3 % THD (Linear Load) - ≤ 6 % THD (Non-linear Load)		≤ 3 % THD (Linear Load) - ≤ 5 % THD (Non-linear Load)		
Transfer time	Line mode to battery mode UPS to Bypass	0 ms 4 ms (Typical)	0 ms 0 ms		0 ms 0 ms	
Current crest ration	3:1					

EFFICIENCY

AC mode	86%	88%	89%	90%	92%	93%
Battery mode	83%	83%	87%	88%	90%	91%
Eco mode	92%	90% ~ 93%	92% ~ 94%	93% ~ 95%	-	-

BATTERY

Battery charger	Operates when UPS connected to mains					
Cold start (no mains)	Yes					
Charging current	1A	Adjustable from 1 to 3.5A		Adjustable from 1 to 6A		
Battery type & number	6V/9 Ah x 4	12 V/9 Ah x 2	12 V/9 Ah x 4	12 V/9 Ah x 6	12 V/9 Ah x 16	12 V/9 Ah x 20
Recharging time	4 hours to 90% after complete discharge			9 hours to 90% after complete discharge		
Backup time	From 5 to 30 min. depending on the connected load					

INDICATORS & ALARMS

LED (E3 Pro RT)	AC mode, Battery mode, fault	-
LCD screen display	-	Load level, Battery level, AC mode, Battery mode, Bypass mode, and fault
Audible alarms	Battery mode, low battery, overload and fault	

BYPASS

Static bypass	Yes
Manual bypass	Optional External Maintenance Bypass switch

COMMUNICATION

Communication ports	USB	USB / RS232
Software	InfoPower (supports Windows® 2000/2003/XP/Vista/2008, Windows® 7, 8, 10, Linux, Unix et MAC)	
SNMP (Option)	Management system through SNMP software (VMware® compatible) and web browser	

ENVIRONMENT

Ideal environment	0-40°C and 20-90 % relative humidity (non condensing)	0-40°C and 0-95 % relative humidity (non condensing)
Noise level	Less than 50dBA @ 1 meter	Less than 55dBA @ 1 meter Less than 58dBA @ 1 meter
Operating Altitude	Up to 1000 m above sea level (> 1000 m 1% deterioration for every 100 m)	

NORMS

Standard (HV)	CE RoHS	
EMC	EN62040-2:2006+AC:2006 (EN61000-3-2:2014; EN61000-4-2:2009; EN61000-4-3:2006+A1:2008+A2:2010; EN61000-4-4:2012; EN61000-4-5:2006; EN61000-4-6:2014; EN61000-4-8:2010; EN61000-4-11:2004; EN61000-2-2:2002)	EN62040-2:2006; EN61000-2-2:2002; EN61000-4-2:2009; EN61000-4-3:2006+A2:2010; EN61000-4-4:2012; EN61000-4-5:2014; EN61000-4-6:2014; EN61000-4-8:2010
LVD	EN62040-1:2008+A1:2013	EN60950-1:2006+A11:2009+A1:2010+A12:2011

SALES INFORMATIONS

Warranty	2 years						
Gencods	3700085 67314 0	3700085 67308 9	3700085 67309 6	3700085 67310 2	3700085 67311 9	3700085 67312 6	3700085 67313 3

BATTERY BANKS

	E3 Pro 1000 RT	E3 Pro 2000 RT	E3 Pro 3000 RT	E3 Pro 5000 RT	E3 Pro 6000 RT	E3 Pro 10k RT
Number & battery type	4 x 12V9Ah	8 x 12V9Ah	8 x 12V9Ah	12 x 12V9Ah	16 x 12V9Ah	20 x 12V9Ah
Dimensions - LxHx (mm)	438 x 390 x 88	438 x 515 x 88	438 x 635 x 88	438 x 688 x 88	438 x 688 x 88	438 x 605 x 133
Net weight - Kg (empty battery bank)	9	9	11	11,2	15	15
Net weight - Kg (with battery bank)	20,6	31,1	31,1	43,3	55	65
Gencods	3700085 67402 4	3700085 67403 1	3700085 67406 5	3700085 67283 9	3700085 67187 0	3700085 67189 4



From 1000 to 10k VA

Communication solutions and remote management

USB & RS232 communication ports

Software :

- Simple user interface
- UPS startup and shutdown programming
- Data and events record enabling daily
- maintenance
- E-mail messaging to manage UPS status at all times via the local network
- Free download from the website

Package content

- 1 UPS
- 1 input cable (1 to 3 kVA models)
- 1 IEC output cable (1 to 3 kVA models)
- 1 USB cable
- 1 floor standing system
- Ears included
- 1 user's manual
- 1 InfoPower software

Options

- SNMP agent (ref: 61424)
- RS 485 card (ref: 61439)
- Rack kit (ref: 61429)
- Dry contact card (ref: 61454)
- External Maintenance Bypass switch (réf. 61442 / 61443 for 1-2-3k RT models and ref. 61445 for 5-6-10k RT models)
- EMD (réf. 61452)
- External Charger :

Model	Ref
Smart Charger 24Vdc for E3 Pro 1k RT	61139
Smart Charger 48Vdc for E3 Pro 2k RT	61140
Smart Charger 72Vdc for E3 Pro 3k RT	61141

- Additional battery banks :

Model	Ref
BB E3 Pro 1000 RT	67402 / 67403
BB E3 Pro 2000 RT	67406
BB E3 Pro 3000 RT	67409
BB E3 Pro 5-6k RT	67187
BB E3 Pro 10k RT	67189

Warranty

Two-year warranty against manufacturing defects under normal use conditions and in compliance with precautionary measures.

Warranty to be registered out on www.infosec-ups.com within 10 days of purchase.



Infosec Communication

4, rue de la Rigotière
44700 ORVAULT - FRANCE
Contact commercial
Tél : 02 40 76 11 77
commercial@infosec.fr

www.infosec-ups.com

