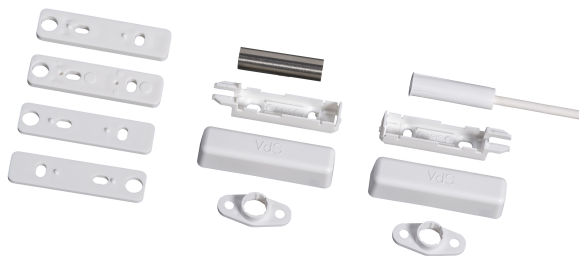


# ISC-PMC-SF2S Magnetic Contact

www.boschsecurity.com



**BOSCH**  
Invented for life



- ▶ Flush / surface mount magnetic contact
- ▶ Parallel or in front-end-position mounting
- ▶ Mountable on ferromagnetic materials
- ▶ EN50131-2-6 Grade 2

Conventional magnetic contacts are used for opening surveillance of windows and doors.

## Functions

The magnetic contact monitors the opening of windows and doors in security applications.

## Certifications and approvals

Region	Certification	
Finland	FK	RL 13 089 [ISC-PMC-SF2S]
Germany	VdS	G 191568 [ISC-PMC-SF2S]
Europe	CE	ISC-PMC-SF2S, ISC-PMC-F3S, ISC-PMC-S3S, ISC-PRS-S2S, ISC-PRS-S3S
	EN50131-2-6 1	[ISC-PMC-SF2S]

## Installation/configuration notes

- Magnetic contact and magnet are mounted parallel or in a front-end-position in window frames, window casements, doors and door frames.
- The magnet can be mounted in the supplied plastic tube.
- The magnet can also be mounted without the plastic tube by inserting it into pre-drilled holes.

- If the magnetic contact is mounted in ferromagnetic materials, the optional flush mount flanges have to be used.
- If the contact is mounted on ferromagnetic material, the spacing pieces have to be used.

## Parts included

Quantity	Component
1	Magnetic contact

## Technical specifications

### Electrical

Maximum permissible contact load in W	5
Minimum switching current in mA	0.01
Maximum switching current in mA	100
Maximum switching voltage in VDC	110
Minimum switch tolerance	10 <sup>7</sup>

**Mechanical**

Installation type	Surface or recess mount, parallel
Contact	Shutter changer
Magnet	AlNiCo 500
Dimension in cm (Ø x D) (switch)	0.8 x 3
Dimension in cm (Ø x D) (magnet)	0.8 x 3
Maximum axial installation distance in cm	1.5
Material	ABS
Color	White
Cable type	LiYY-ZGL 4 x 0.14 mm, suitable for LSA-PLUS insulation displacement technology
Cable length in m	1

**Environmental**

Minimum operating temperature in °C	-40
Maximum operating temperature in °C	70
Protection class	IP67
Environmental class (VdS)	III
Environmental class (EN)	IIIA

**Ordering information****ISC-PMC-SF2S Magnetic Contact**

Surface and flush mountable magnetic contact.  
Order number **ISC-PMC-SF2S**

**Represented by:**

**Europe, Middle East, Africa:**  
Bosch Security Systems B.V.  
P.O. Box 80002  
5600 JB Eindhoven, The Netherlands  
Phone: + 31 40 2577 284  
emea.securitysystems@bosch.com  
emea.boschsecurity.com

**Germany:**  
Bosch Sicherheitssysteme GmbH  
Robert-Bosch-Ring 5  
85630 Grasbrunn  
Germany  
www.boschsecurity.com

**North America:**  
Bosch Security Systems, Inc.  
130 Perinton Parkway  
Fairport, New York, 14450, USA  
Phone: +1 800 289 0096  
Fax: +1 585 223 9180  
onlinehelp@us.bosch.com  
www.boschsecurity.us

**Asia-Pacific:**  
Robert Bosch (SEA) Pte Ltd, Security Systems  
11 Bishan Street 21  
Singapore 573943  
Phone: +65 6571 2808  
Fax: +65 6571 2699  
apr.securitysystems@bosch.com  
www.boschsecurity.asia