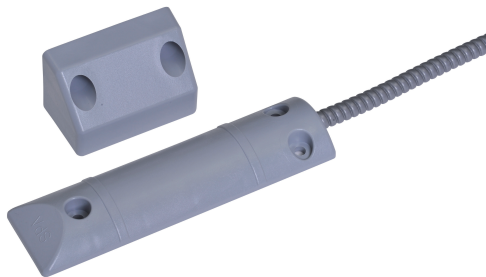


ISC-PRS-S2S shutter door contact

www.boschsecurity.com



BOSCH
Invented for life



- ▶ Conventional shutter door contact
- ▶ For connection to the conventional intrusion control panel
- ▶ EN 50131-2-6 Grade 2
- ▶ High level of mechanical strength
- ▶ Conventional perimeter protection

Conventional shutter door contacts are used to monitor shutter, sliding and garage doors.

Certifications and approvals

Region	Certification	
Finland	FK	RL 13 088 ISC-PRS-S2S
Germany	VdS	G 103520 ISC-PRS-S2S
Europe	CE	AMK 4 Z
	EN50131 1	ISC-PRS-S2S

Installation/configuration notes

Installation information

- For doors < 1.5 m, one shutter door contact is required. For doors > 1.5 m, use two shutter door contacts. Take note of the permissible installation tolerances.
- The shutter door contact consists of a sealed magnetic switch and a magnet in a plastic housing. The connection cable is protected over a length of 1 m by flexible metal conduit.
- The magnetic switch is installed at ground level (requires a flat surface). The switch will not be damaged if driven over by vehicles with rubber tires. However, the magnetic switch must not be used as a door stopper.

- The supply lines must be electrically measured prior to connection.

Parts included

Type	Qty.	Components
ISC-PRS-S2S	1	Shutter door contact incl. magnet, installation material, and cable

Technical specifications

Over threshold voltage	≤ 30 V
Over threshold current	10 µA up to 100 mA
Rating	≤ 3 W
Reed contact type	Normally open contact
Switch tolerance	≥ 10 ⁷
Installation distance	20 to 40 mm
Magnetic material	AlNiCo 500
Temperature range	-25 °C to +70 °C
Connection cable	LiYY 4 x 0.14 mm ² Sn, / 3.2 mm, white
Cable length	1 m

Cable protection tube	Flexible metal tube, diameter: 6/9 mm, covered in plastic, length: 1 m, color: gray
Housing material/color	Plastic/gray
Weight (with cable and magnet)	Approx. 250 g
Switch dimension	150 x 40 x 13.5 mm
Magnet dimension	65 x 42 x 35 mm
Protection category	IP65
Environmental class	III

Ordering information

ISC-PRS-S2S shutter door contact

For monitoring shutter, sliding, and garage doors
Order number **ISC-PRS-S2S**

Represented by:

Americas:

Bosch Security Systems, Inc.
130 Perinton Parkway
Fairport, New York, 14450, USA
Phone: +1 800 289 0096
Fax: +1 585 223 9180
security.sales@us.bosch.com
www.boschsecurity.us

Europe, Middle East, Africa:

Bosch Security Systems B.V.
P.O. Box 80002
5617 BA Eindhoven, The Netherlands
Phone: + 31 40 2577 284
Fax: +31 40 2577 330
emea.securitysystems@bosch.com
www.boschsecurity.com

Asia-Pacific:

Robert Bosch (SEA) Pte Ltd, Security Systems
11 Bishan Street 21
Singapore 573943
Phone: +65 6571 2808
Fax: +65 6571 2699
apr.securitysystems@bosch.com
www.boschsecurity.asia

China:

Bosch (Shanghai) Security Systems Ltd.
201 Building, No. 333 Fuquan Road
North IBP
Changning District, Shanghai
200335 China
Phone +86 21 22181111
Fax: +86 21 22182398
www.boschsecurity.com.cn

America Latina:

Robert Bosch Ltda Security Systems Division
Via Anhanguera, Km 98
CEP 13065-900
Campinas, Sao Paulo, Brazil
Phone: +55 19 2103 2860
Fax: +55 19 2103 2862
latam.boschsecurity@bosch.com
www.boschsecurity.com