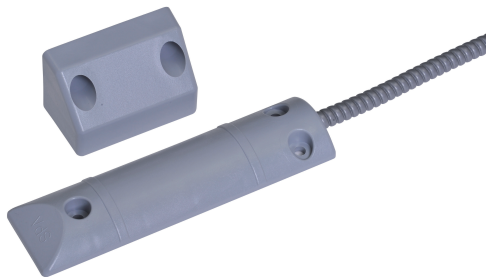


ISC-PRS-S3S shutter door contact

www.boschsecurity.com



BOSCH
Invented for life



- ▶ Conventional shutter door contact
- ▶ EN50131-2-6 Grade 3
- ▶ Tamper switch
- ▶ High level of mechanical strength
- ▶ Conventional perimeter protection

Conventional shutter door contacts are used to monitor shutter, sliding, and garage doors.

Certifications and approvals

Region	Certification	
Finland	FK	RL 13 087 ISC-PRS-S3S
Germany	VdS	G 103127 ISC-PRS-S3S
Europe	CE	ISC-PRS-S3S
	EN50131-2-6	ISC-PRS-S3S

Installation/configuration notes

Installation information

- For doors < 1.5 m, one shutter door contact is required. For doors > 1.5 m, use two shutter door contacts. Take note of the permissible installation tolerances.
- The shutter door contact consists of a sealed magnetic switch and a magnet in a plastic housing. The connection cable is protected over a length of 1 m by flexible metal conduit.
- The magnetic switch is installed at ground level (requires a flat surface). The switch will not be damaged if driven over by vehicles with rubber tires. However, the magnetic switch must not be used as a door stopper.

- The supply lines must be electrically measured prior to connection.

Parts included

Type	Quantity	Component
ISC-PRS-S3S	1	Shutter door contact incl. magnet, installation material, and cable

Technical specifications

Over threshold voltage	≤ 30 V
Over threshold current	10 µA up to 100 mA
Rating	≤ 3 W
Reed contact type	Normally open contact
Switch tolerance	≥ 10 ⁷
Installation distance	30 to 35 mm
Magnetic material	AlNiCo 500
Temperature range	-25 °C to +70 °C
Connection cable	LiYY 4 x 0.14 mm ² Sn, 3.2 mm, white
Cable length	1 m

Cable protection tube	Flexible metal tube, diameter: 6/9 mm, covered in plastic, length: 1 m, color: gray
Housing material/color	Plastic/gray
Weight (with cable and magnet)	App. 250g
Switch dimension	150 x 40 x 13.5 mm
Magnet dimension	65 x 42 x 35 mm
Protection category	IP65
Environmental class	III

Ordering information

ISC-PRS-S3S shutter door contact

For monitoring shutter, sliding, and garage doors, tamper surveillance
 Order number **ISC-PRS-S3S**

Represented by:

Americas:

Bosch Security Systems, Inc.
 130 Perinton Parkway
 Fairport, New York, 14450, USA
 Phone: +1 800 289 0096
 Fax: +1 585 223 9180
 security.sales@us.bosch.com
 www.boschsecurity.us

Europe, Middle East, Africa:

Bosch Security Systems B.V.
 P.O. Box 80002
 5617 BA Eindhoven, The Netherlands
 Phone: + 31 40 2577 284
 Fax: +31 40 2577 330
 emea.securitysystems@bosch.com
 www.boschsecurity.com

Asia-Pacific:

Robert Bosch (SEA) Pte Ltd, Security Systems
 11 Bishan Street 21
 Singapore 573943
 Phone: +65 6571 2808
 Fax: +65 6571 2699
 apr.securitysystems@bosch.com
 www.boschsecurity.asia

China:

Bosch (Shanghai) Security Systems Ltd.
 201 Building, No. 333 Fuquan Road
 North IBP
 Changning District, Shanghai
 200335 China
 Phone +86 21 22181111
 Fax: +86 21 22182398
 www.boschsecurity.com.cn

America Latina:

Robert Bosch Ltda Security Systems Division
 Via Anhanguera, Km 98
 CEP 13065-900
 Campinas, Sao Paulo, Brazil
 Phone: +55 19 2103 2860
 Fax: +55 19 2103 2862
 latam.boschsecurity@bosch.com
 www.boschsecurity.com