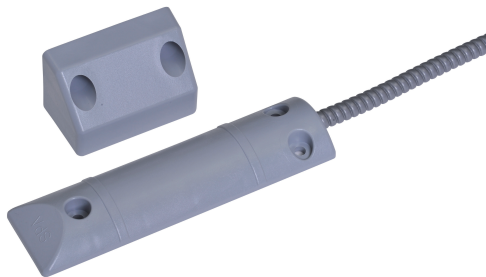


# ISC-RSC3-S shutter door contact

www.boschsecurity.com



**BOSCH**  
Invented for life



- ▶ Conventional shutter door contact
- ▶ Tamper switch
- ▶ High level of mechanical strength
- ▶ Conventional perimeter protection
- ▶ VdS class C, EN50131-2-6 Grade 3

Conventional shutter door contacts are used to monitor shutter, sliding and garage doors.

## Certifications and approvals

Region	Certification	
Germany	VdS	G113047
Europe	CE	
	ISC-RSC3-S	

## Installation/configuration notes

### Installation information

- For doors < 1.5 m, one shutter door contact is required. For doors > 1.5 m, use two shutter door contacts. Take note of the permissible installation tolerances.
- The shutter door contact consists of a sealed magnetic switch and a magnet in a plastic housing. The connection cable is protected over a length of 1 m by flexible metal conduit.
- The magnetic switch is installed at ground level (requires a flat surface). The switch will not be damaged if driven over by vehicles with rubber tires. However, the magnetic switch must not be used as a door stopper.
- The supply lines must be electrically measured prior to connection.

## Parts included

Type	Qty.	Components
ISC-RSC3-S	1	Shutter door contact incl. magnet, installation material, and cable

## Technical specifications

Over threshold voltage	≤ 30 V
Over threshold current	10 µA up to 100 mA
Rating	≤ 3 W
Reed contact type	Normally open contact
Switch tolerance	≥ 10 <sup>7</sup>
Installation distance	30 to 35 mm
Magnetic material	AlNiCo 500
Temperature range	-25 °C to +70 °C
Connection cable	LiYY 4 x 0.14 mm <sup>2</sup> Sn, / 3.2 mm, white
Cable length	4 m
Cable protection tube	Flexible metal tube, diameter: 6/9 mm, covered in plastic, length: 1 m, color: gray

Housing material/color	Plastic/gray
Weight (with cable and magnet)	Approx. 250 g
Switch dimension	150 x 40 x 13.5 mm
Magnet dimension	65 x 42 x 35 mm
Protection category	IP67
Environmental class VdS/EN	III/IIIA

### Ordering information

#### ISC-RSC3-S shutter door contact

For monitoring shutter, sliding, and garage doors,  
tamper surveillance

Order number **ISC-RSC3-S**

#### Represented by:

##### Americas:

Bosch Security Systems, Inc.  
130 Perinton Parkway  
Fairport, New York, 14450, USA  
Phone: +1 800 289 0096  
Fax: +1 585 223 9180  
security.sales@us.bosch.com  
www.boschsecurity.us

##### Europe, Middle East, Africa:

Bosch Security Systems B.V.  
P.O. Box 80002  
5617 BA Eindhoven, The Netherlands  
Phone: + 31 40 2577 284  
Fax: +31 40 2577 330  
emea.securitysystems@bosch.com  
www.boschsecurity.com

##### Asia-Pacific:

Robert Bosch (SEA) Pte Ltd, Security  
Systems  
11 Bishan Street 21  
Singapore 573943  
Phone: +65 6571 2808  
Fax: +65 6571 2699  
apr.securitysystems@bosch.com  
www.boschsecurity.asia

##### China:

Bosch (Shanghai) Security Systems Ltd.  
201 Building, No. 333 Fuquan Road  
North IBP  
Changning District, Shanghai  
200335 China  
Phone +86 21 22181111  
Fax: +86 21 22182398  
www.boschsecurity.com.cn

##### America Latina:

Robert Bosch Ltda Security Systems Division  
Via Anhanguera, Km 98  
CEP 13065-900  
Campinas, Sao Paulo, Brazil  
Phone: +55 19 2103 2860  
Fax: +55 19 2103 2862  
latam.boschsecurity@bosch.com  
www.boschsecurity.com