



# Everything you need for a complete overview

## Product highlights

### Designed for medium-sized installations

Supports **unlimited numbers of cameras** so you can connect any camera model and any number

Supports **unlimited numbers of recording servers** so you can spread the installation across multiple buildings

Supports **master/slave set-up** so you can transparently view recordings from multiple servers from a single place

Easily add new users using **Microsoft Active Directory**

### Respond to incidents quickly

**Multi-layer, interactive maps** provide a complete overview of the entire system with camera locations

Camera locations and **live preview** video displayed directly on the map for quick investigations

Monitor, manage and resolve incidents quickly with **Alarm Manager**

Easily document events as they happen with **advanced video search tools**

Actively monitor entry points and communicate with people at gates with **two-way audio support**

### Access anytime, anywhere

**Three free clients** provides access on-site, off-site and on the go

**XProtect Smart Client** is a powerful interface for daily operations with sophisticated tools for finding and exporting evidence material

**Milestone Mobile** gives ultimate peace of mind with access to the system from anywhere

With **push notifications** sent directly to your mobile, you always know when something needs your attention

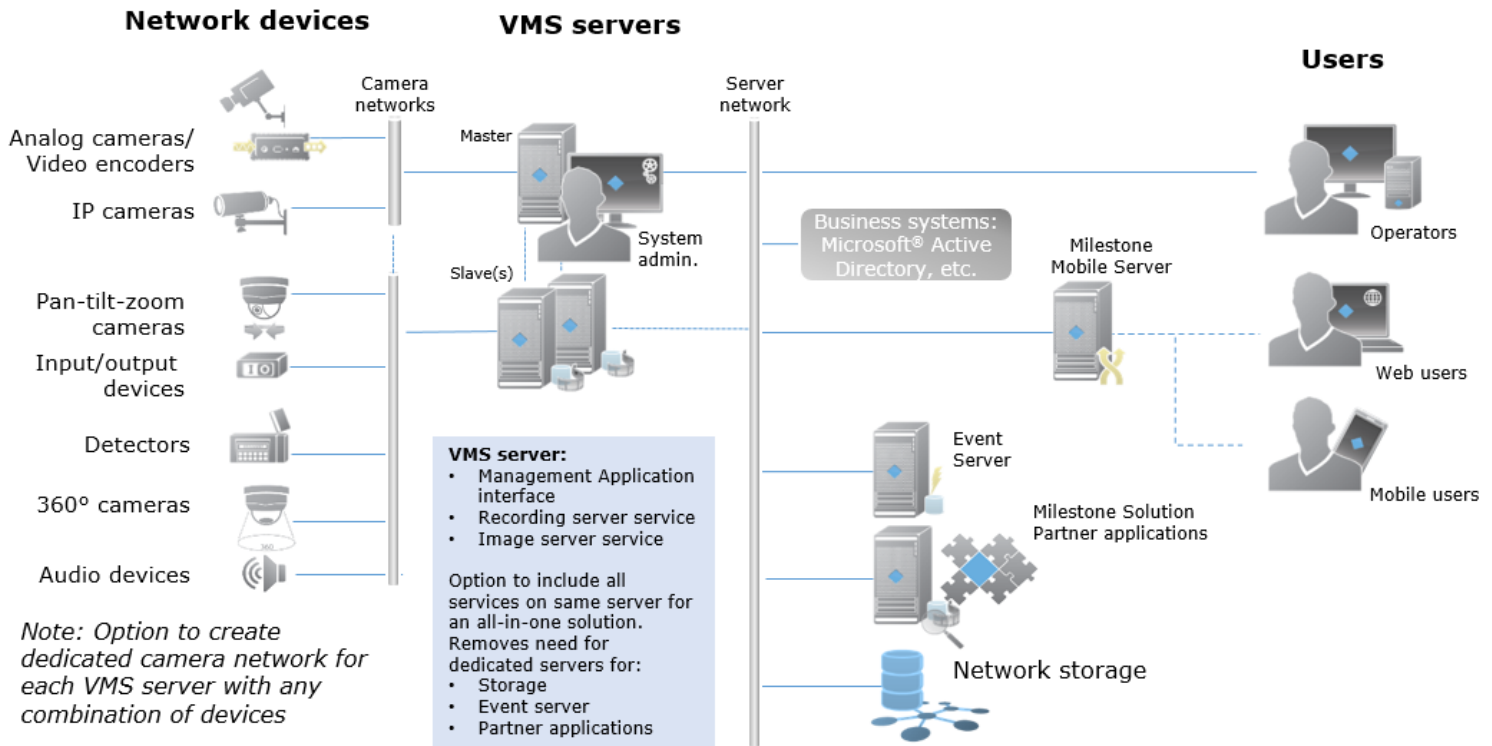
**XProtect Web Client** enables you to connect anywhere through browsers

# XProtect Professional

## Ordering information

SKU	Description
XPPBL	XProtect Professional Base License
XPPCL	XProtect Professional Device License
YXPPCL	1-year Care Plus for device license

## System diagram



A single **Management Application interface** provides a single point of access to Recording Servers. System configuration wizards help add cameras, configure video and recording, adjust motion detection and configure multiple users.

**Mobile Server** runs as a dedicated service allowing it to be installed with an existing installation or on dedicated hardware for more demanding installations.

**Event Server** provides advanced multi-layered maps giving operators interactive access and control of the complete surveillance system. It hosts features for the alarm function and any third-party solution plug-ins.

## Specifications

General	Detail
Type of deployment	Multi-server
Licensing	Perpetual
Max number of cameras	Unlimited
Max number of recording servers	Unlimited
Max number of users	Unlimited
Multiple video export format	Yes
Support all XProtect Clients	Yes
Alarm Manager	Yes
Map function	Yes
Archiving to network storage	Yes
XProtect Add-Ons and third-party integrations	Yes
Microsoft Active Directory support	Yes
Milestone Interconnect	Yes, remote site
Customer Dashboard	Yes, with Care Plus
Alarm Manager	
Ability to assign initial owner of an alarm	Yes
View triggered alarms	Yes
Manage alarms	Yes
Push alarms to users of Milestone Mobile	Yes, with Care Plus
Alarm sound notification	Yes
Alarm logging	Yes
Alarm handling reporting	Yes

Device support	
Support for ONVIF compliant devices	Yes
Support for PSIA compliant devices	Yes
Secure HTTPS camera connectivity	Yes
Number of supported IP camera model	5136 different models
MJPEG, MPEG-4, MPEG-4 ASP, MxPEG	Yes
H.264 support	Yes
Dual stream per camera	Yes
Two way audio support	Yes
Two way audio recording	Yes
Presents positions per camera	Yes
Go-to presets on event	Yes
Set up	
Smart Start plug-and-play	Yes
• Automatic configuration wizard	Yes
• Automatic camera discovery	Yes
• Automatic IP address assignment*	Yes
• Automatic time synchronization*	Yes
• Automatic storage allocation	Yes
System configuration restore points	Yes
Automatic license activation	Yes
Export/Import of configuration data	Yes

\* For supported cameras